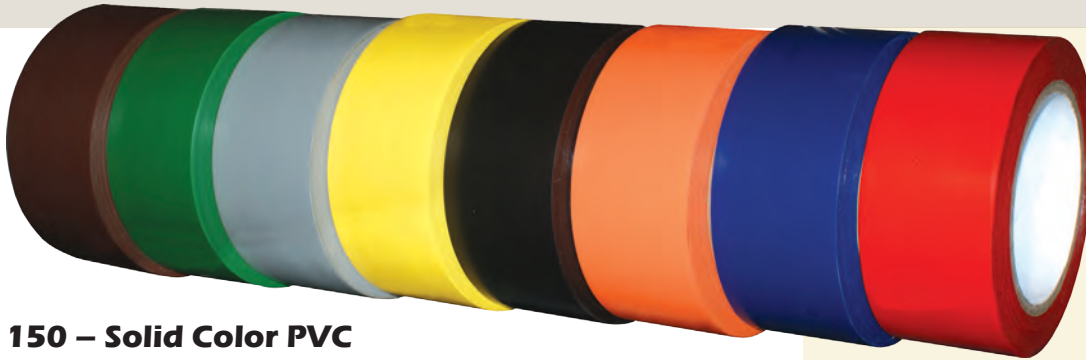


Safety



- ***Vinyl***
- ***Barricade***
- ***Underground***
- ***Reflective***
- ***Anti-Slip***

Vinyl Safety Tapes are designed specifically with high visibility or immediate visual impact in mind. Their bright solid colors and/or striped patterns are perfect for lane marking and hazard identification. The breadth of colors also allows for non-critical applications where color coding or identification is required. Soft polyvinylchloride (PVC) base film provides for durability, puncture, tear and scratch resistance. Specially blended rubber adhesive makes these tapes adhere quickly to surfaces while conforming well even on irregular surfaces. Tapes adhere firmly while removing cleanly off most surfaces. Color throughout the film ensures consistent visibility during tape use.




150 – Solid Color PVC Marking Tape

- Tape colors designed to meet OSHA safety coding requirements.
- Excellent conformability to uneven shapes and surfaces
- Suitable for decorating, striping, and sealing.
- Moisture, weather and chemical resistant.
- Tape Thickness: 6.0 mil Adhesion: 30 oz/in
Tensile Strength: 18 lb/in Elongation: 160%



150C – Clean Room PVC Tape

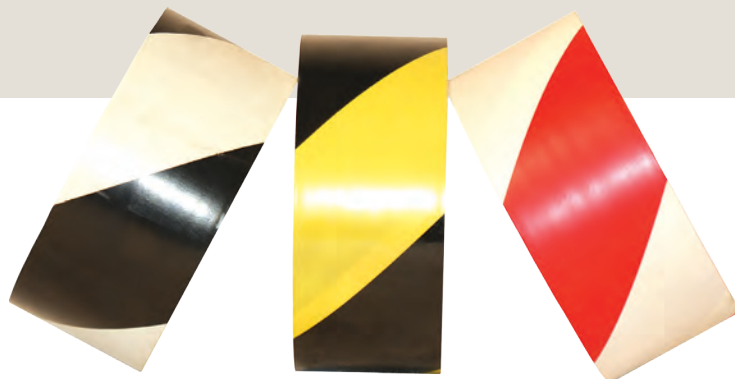
- Soft white PVC film tape designed specifically for clean room applications where contaminant / dust control is critical.
- Tape is provided on a **3" Plastic Core and each roll wrapped to meet Clean room requirements.**
- Available color: white.
- Tape Thickness: 6.0 mil Adhesion: 30 oz/in
Tensile Strength: 18 lb/in Elongation: 160%

Series	Product Code	Size	Units/Case	Pack	Features	
150 ✂	COLORS: purple(0), yellow(1), red(2), white(3), orange(4), blue(5), brown(6), gray(7), green(8) black(9), clear(05)					
	15503_	3/8" (9 mm)	x 36 yd	128 / case	bulk	Eleven colors provide for a wide range of color coding applications and lane marking differentiation. 
	15505_	1/2" (12 mm)	x 36 yd	96 / case	bulk	
	15507_	3/4" (19 mm)	x 36 yd	64 / case	bulk	
	15510_	1" (25 mm)	x 36 yd	48 / case	bulk	
	15520_	2" (50 mm)	x 36 yd	24 / case	cello	
	15530_	3" (75 mm)	x 36 yd	16 / case	bulk	
	15540_	4" (100 mm)	x 36 yd	12 / case	bulk	
	L150108_0	48" (1219 mm)	x 36 yd	2 / case	log	
	15605_	1/2" (12 mm)	x 60 yd	96 / case	bulk	
	15607_	3/4" (19 mm)	x 60 yd	64 / case	bulk	
	15610_	1" (25 mm)	x 60 yd	48 / case	bulk	
	15620_	2" (50 mm)	x 60 yd	24 / case	bulk	
	15630_	3" (75 mm)	x 60 yd	16 / case	bulk	
	15640_	4" (100 mm)	x 60 yd	12 / case	bulk	
	L150180_0	48" (1219 mm)	x 60 yd	2 / case	log	
150C	155201N	1" (25 mm)	x 36 yd	48 / case	cello	
	155203N	2" (50 mm)	x 36 yd	24 / case	cello	

141 – Safety Striped PVC Marking Tape

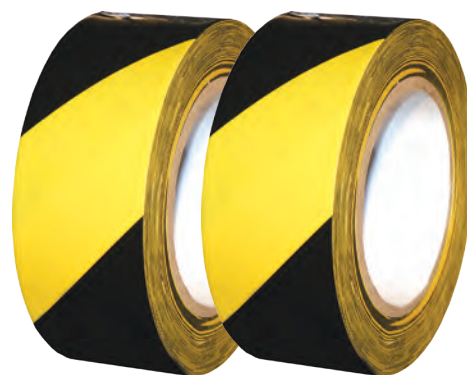
- Striped pattern warns of physical hazards & dangers such as low pipes, ceilings, steps, doorways and exits.
- When applied to trucks, forklifts & other vehicles, it increases danger awareness.
- Tape Thickness: 6.0 mil Adhesion: 21 oz/in
Tensile Strength: 16 lb/in Elongation: 200%



- Black/Yellow** – Indicates physical Hazard/ Caution
- Red/White** – Indicates placement of Fire Equipment/First Aid
- Black/White** – Indicates potentially dangerous areas/Traffic areas.
- Purple/Yellow** – Indicates Radiation Hazards.
- Green/White** – Used for Decorative Identification



143 – Laminated Safety Striped PVC Tape

- PVC carrier is top coated with an overlamine of clear polypropylene film to enhance performance.
- Lamination protects the tape for long life & durability in heavy traffic areas.
- Tape Thickness: 7.5 mil Adhesion: 18 oz/in
Tensile Strength: 18 lb/in Elongation: 180%



Series	Product Code	Size	Units/Case	Pack	Features
141 ✂	COLORS: black/yellow(BY), red/white(RW), black/white(BW), purple/yellow(PY), green/white(GW)				
	14110_1	1" (25 mm) x 18 yd	48 / case	bulk	Use it to mark fire equipment and hazardous areas to comply with OSHA regulations 1910.22 and 1920.144. 
	14120_1	2" (50 mm) x 18 yd	24 / case	bulk	
	14130_1	3" (75 mm) x 18 yd	16 / case	bulk	
	14140_1	4" (100 mm) x 18 yd	12 / case	bulk	
	L141054_	48" (1219 mm) x 18 yd	2 / case	log	
	14110_2	1" (25 mm) x 36 yd	48 / case	bulk	
	14120_2	2" (50 mm) x 36 yd	24 / case	bulk	
	14130_2	3" (75 mm) x 36 yd	16 / case	bulk	
	14140_2	4" (100 mm) x 36 yd	12 / case	bulk	
L141108_	48" (1219 mm) x 36 yd	2 / case	log		
143 ✂	COLORS: black/yellow(BY), red/white(RW), black/white(BW)				
	14320_1	2" (50 mm) x 18 yd	24 / case	bulk	Abrasion resistant. Shiny surface and highly visible. 
	14330_1	3" (75 mm) x 18 yd	16 / case	bulk	
	14340_1	4" (100 mm) x 18 yd	12 / case	bulk	
	14320_2	2" (50 mm) x 36 yd	24 / case	bulk	
	14330_2	3" (75 mm) x 36 yd	16 / case	bulk	
	14340_2	4" (100 mm) x 36 yd	12 / case	bulk	

Barricade tapes are an economical way to mark, identify and protect workers and visitors from job site dangers. These products offer a long lasting marking solution for off-limit areas or crowd control. A variety of mil thicknesses are offered so the correct product may be matched with the projects duration and other variables such as weather exposure. Note that our barricade film tapes are sold by their true thickness, not a “nominal” thickness that often won’t stack up to ours.

- **Designed to protect & identify both above & below ground hazardous areas.**
- **Long lasting marking solutions for off-limit areas or crowd control.**
- **ALL our Barricade films are noted as True Thickness not Nominal.**



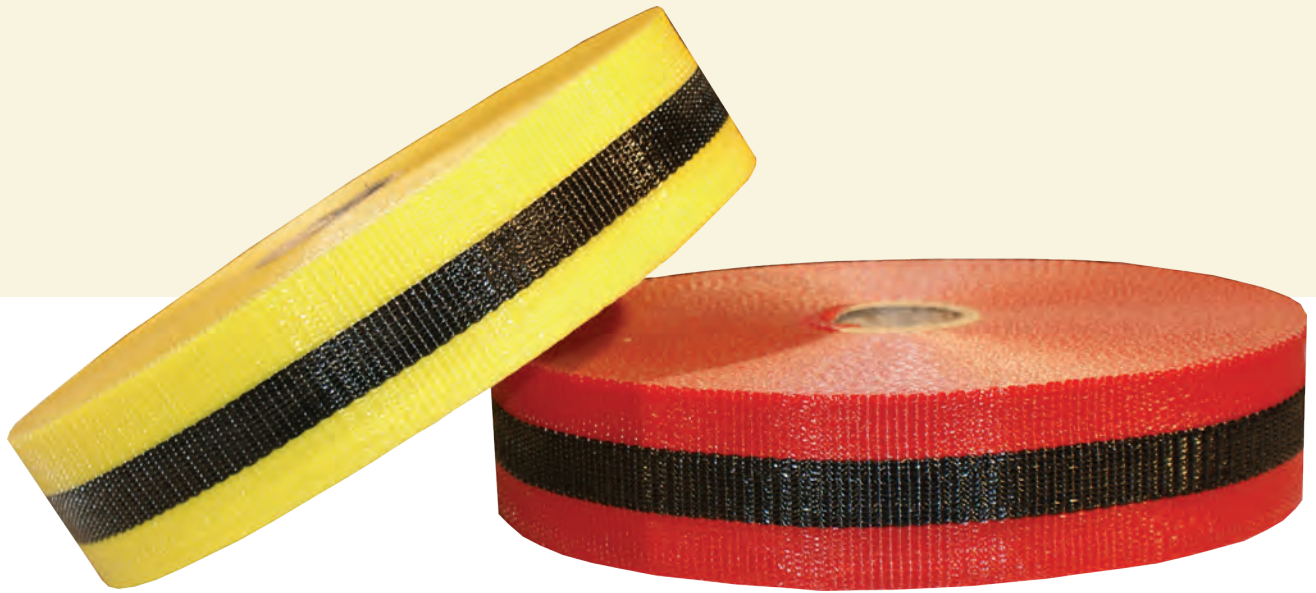
865 & 866 – Barricade Tapes – CAUTION & DANGER

- Long lasting marking solutions for off-limit areas or crowd control.
- Durable non-adhesive Polyethylene film with bright visible colors (Yellow or Red).
- Standard legends in black lettering – including Spanish Bilingual.

Series	Thickness	Product Code	Color	Size	Units/Case	Pack	Legend
865	1.5 mil	86500	Yellow	3" (75 mm) x 1000 ft	8 / case	bulk	Caution Caution Caution
865	2 mil	86551	Yellow	3" (75 mm) x 300 ft	16 / case	bulk	Caution Caution Caution
865	2 mil	86501	Yellow	3" (75 mm) x 1000 ft	8 / case	bulk	Caution Caution Caution
865	3 mil	86503	Yellow	3" (75 mm) x 1000 ft	8 / case	bulk	Caution Caution Caution
865	2 mil	86502	Yellow	3" (75 mm) x 1000 ft	8 / case	bulk	Caution Do Not Enter
866	2 mil	86651	Red	3" (75 mm) x 300 ft	16 / case	bulk	Danger Danger Danger
866	2 mil	86601	Red	3" (75 mm) x 1000 ft	8 / case	bulk	Danger Danger Danger
866	2 mil	86602	Red	3" (75 mm) x 1000 ft	8 / case	bulk	Danger Do Not Enter
865	2 mil	86511	Yellow	3" (75 mm) x 1000 ft	8 / case	bulk	Caution Cuidado
866	2 mil	86611	Red	3" (75 mm) x 1000 ft	8 / case	bulk	Danger Peligro

Other Legends Available – The following are available on a special order basis.

CAUTION CONSTRUCTION COMPANY	FIRE LINE DO NOT CROSS
CAUTION DO NOT ENTER / CUIDADO NO ENTRE	POLICE LINE DO NOT CROSS
CAUTION HARD HAT AREA	SHERIFFS LINE DO NOT CROSS
CRIME SCENE DO NOT CROSS	WET PAINT
BLACK & YELLOW STRIPE	



892 – Woven Barricade Tape

- Heavy duty woven polypropylene film ensures long life.
- High tensile strength (275 #) provides a rigid barrier resistant to high winds and rigorous impact.
- Yellow or Red woven carrier with solid black line down through web center.



870 – Flagging Tape – Standard (Non-Glow) PVC

- Typically used in construction environments for surveying, mapping, and roping off an area.
- Non adhesive PVC carrier ensures no residue left behind.

875 – Flagging Tape – High Visibility (Glow) PVC

- Glow version designed to provide greater visual impact.

Series	Product Code	Size	Units/Case	Pack	Features
892	892150	Yellow/Black 2" (50 mm) x 150 ft	48 / case	bulk	UV stabilizers enhance tape longevity in outdoor climates.
	893150	Red/Black 2" (50 mm) x 150 ft	48 / case	bulk	
870	COLORS: yellow(1), red(2), white(3), orange(4), blue(5), green(8)				Suitable for tagging or marking – easy to tie / easy to tear.
	8700_	1 3/16" (30 mm) x 300 ft	12 / case	bulk	
875	COLORS: yellow(1), red(2), orange(4) blue(5), pink(6), lime(8)				Glow version designed to provide greater visual impact.
	8750_	1 3/16" (30 mm) x 150 ft	12 / case	bulk	

Underground tapes are used for marking, indicating and alerting workers to buried utility installations. There are two common types of underground tapes used for this purpose: **845 Detectable Underground Tape** has an aluminum backing making it detectable by a non-ferrous metal detector. **868 Non-Detectable Tape** lacks the aluminum backing of the detectable product but still offers a visual indication of utility work, pipes and cable buried below. Both products offer a degree of protection against costly service interruptions and repairs.

BURIED GAS LINE BELOW	Yellow (1)
BURIED ELECTRICAL LINE BELOW	Red (2)
BURIED FIBER OPTIC/TELEPHONE LINE BELOW	Orange (4)
BURIED WATER LINE BELOW	Blue (5)
BURIED SEWER LINE BELOW	Green (8)



845 – Underground DETECTABLE – PE with Foil Laminate

- The ultimate protection for underground utility lines.
- Highly resistant to all chemical and organic compounds.
- Immediately identifies the type of utility line buried below, both by permanently printed legend and an APWA designated utility color.

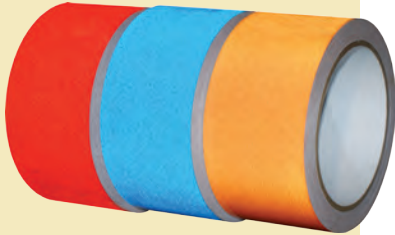


868 – Underground NON-DETECTABLE

- 100% virgin LDPE with lead free pigments and color stabilizers to resist bleeding.
- Identifies the type of utility line buried, below, both by printed legend and an APWA designated utility color.
- Highly resistant to all alkaline, chemical and organic compounds.

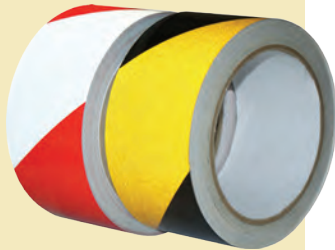
Series	Product Code	Size	Units/Case	Pack	Features
845		COLORS: yellow(1), red(2), orange(4), blue(5), green(8)			Helps prevent interrupted utility service, costly repairs, and possible liability.
	8452_	2" (50 mm) x 1000 ft	12 / case	bulk	
	8453_	3" (75 mm) x 1000 ft	8 / case	bulk	
	8456_	6" (150 mm) x 1000 ft	4 / case	bulk	
868		COLORS: yellow(1), red(2), orange(4), blue(5), green(8)			For use in trenched or direct buried facilities.
	8683_	3" (75 mm) x 1000 ft	8 / case	bulk	
	8686_	6" (150 mm) x 1000 ft	6 / case	bulk	

Reflective Safety Tapes provide the ultimate in visual impact. These tapes are constructed with aggressive weather resistant adhesives coated on tough yet flexible films that carry an encapsulation of reflective materials. This combination provides vibrant daytime visibility and brilliant nighttime reflectivity. Various colors and patterns allow for flexible use on transportation, signage, and on industrial and construction sites. Removable paper release liner allows for tape to be die cut into shapes.



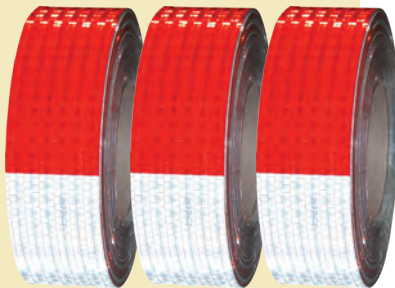
835 – Solid Color Reflective Tape

- Colored Engineering grade reflective sheeting offers 7-year durability.
- Recommended for substrates including glass, metal, painted surfaces, and rigid plastics.
- Minimum Application Temperature: 40°F
- **Meets ASTM 4956-99 Reflectivity Type 1.**



837 – Striped Reflective Tape

- Available colors: black/yellow or red/white diagonal stripe.
- Laminate of clear film over stripe enhances color and pattern durability.
- **Meets federal specification L-S-300C, Reflectivity 1, Class 1.**



838 – Conspicuity Reflective Truck Tape

- Designed for rugged outdoor use on the sides and rear of truck/trailers or other vehicles.
- Easy to apply to smooth surfaces, or surfaces where tape must go around or over rivets.
- Tough, weather and solvent resistant, resists cracking and lifting.
- 8 mil polyester based conformable tape with 7-year durability.
- Minimum 700 candlepower / typically 1000 candlepower.
- Available color: red/white horizontal stripe.
- **Meets NHTSA 49CFR Part 571 Conspicuity regulations for Department of Transportation.**

Below items are available by the roll

Series	Product Code	Size	Units/Case	Pack	Features
835		COLORS: yellow(1), red(2), silver/white(3), orange(4), blue(5), green(8)			Designed for use on clean, flat surfaces with little to no curvature.
	835_	1" (25.4 mm) x 150 ft	Sold by the roll	bulk	
	836_	1" (25.4 mm) x 30 ft	Sold by the roll	bulk	
837		COLORS: black/yellow(1), red/white(2)			Same application recommendations as with our 835 reflective tape.
	83720_	2" (50.8 mm) x 30 ft	24 / case	bulk	
	83730_	2" (50.8 mm) x 150 ft	6 / case	bulk	
838	838202	2" (50.8 mm) x 150 ft	4 / case	bulk	Provides clear warning to oncoming motorist to help reduce accidents.

Anti-Slip Safety Tapes provide a safe, non-slip surface under shoe traffic to prevent unnecessary slips and falls. A flexible vinyl backing filled with a gritty mineral abrasive to deliver traction on flooring in work areas, stair treads, construction equipment, ramp ways, transportation and recreational vehicles. These tapes are designed for indoor and outdoor use wherever a non-skid surface is required.

3200 – Coarse Grit Surface Anti-Slip Tapes

- Installs in seconds; just peel off paper backing and press into place.
- Unaffected by environmental conditions and mild acid or alkali exposure under normal conditions.
- Available in range of colors or striped pattern for subtle or high visibility.
- Glow-in-the dark version has excellent luminescent properties perfect for areas where lighting can be limited such as emergency exits, stairwells, theaters, closets, etc.



Series	Product Code	Color	Size	Units/Case	Pack
3200	75092	Black	2" (50 mm) x 60 ft	6 / case	cello
	75093	Black	3" (75 mm) x 60 ft	4 / case	cello
	75094	Black	4" (100 mm) x 60 ft	3 / case	cello
	75096	Black	6" (150 mm) x 60 ft	2 / case	cello
		COLORS: clear(0), yellow(1), red(2), white(3), orange(4), dark blue(5), green(8), light blue(51)			
3200C	75120_	See Color Chart	2" (50 mm) x 60 ft	6 / case	cello
	75130_	See Color Chart	3" (75 mm) x 60 ft	4 / case	cello
	75140_	See Color Chart	4" (100 mm) x 60 ft	3 / case	cello
3200BY	75120BY	Yellow/Black Diagonal	2" (50 mm) x 60 ft	6 / case	cello
	75130BY	Yellow/Black Diagonal	3" (75 mm) x 60 ft	4 / case	cello
	75140BY	Yellow/Black Diagonal	4" (100 mm) x 60 ft	3 / case	cello
3200G	75120G	Glow-in-the-Dark	2" (50 mm) x 60 ft	6 / case	cello